

Using Kurzweil 3000 as a Testing Accommodation Three Step Process Overview

Step 1: Getting the Test into Kurzweil 3000

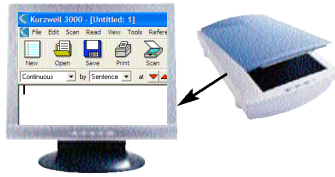
There are two easy methods to get a test into Kurzweil 3000, either:

A. Open Kurzweil 3000 and scan the paper version of the test.

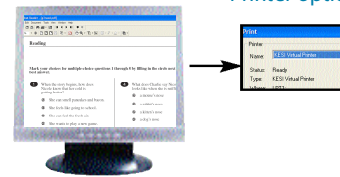
OR

B. Open the electronic version of the test (e.g., .pdf, .doc, .txt, .rtf, etc.), then convert into Kurzweil 3000 using the KESI Virtual Printer option.

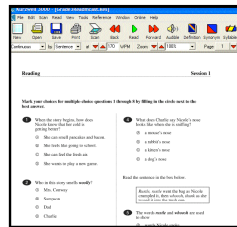
Start Kurzweil 3000 and click on the Scan Icon



Open the electronic file Use KESI Virtual Printer option



Test Appears in Kurzweil 3000 format



Step 2: Proof, Edit and Distribute the Test

Once the test document is in Kurzweil 3000, it should be checked for accuracy since some recognition errors may have occurred. Once this process is completed — it doesn't take long — the document is ready for distribution on test day. The recommended sequence to proof, edit and distribute a test is:

1. Read the page aloud.



2. Check the reading order and, if necessary, change the reading order and/or identify passages that should not be read aloud.

This passage will not be read aloud



Reading Session 2

4. Much of the weight and strength of bones comes from minerals, especially calcium. People need calcium and vitamins to keep their bones strong and healthy. Milk, yogurt, and broccoli are some foods rich in calcium. Exercise also helps keep bones strong.

5. The center of a bone is filled with a material called bone marrow. Part of the bone marrow makes the cells that give your blood its red color. These cells carry oxygen from the air you breathe to every part of your body.

The outside of a bone is very hard and strong. At the ends of long bones is a light, spongy tissue. The center of the bone is filled with bone marrow.

From THE WORLD OF BONES, STUDENT DISCOVERY ENCICLOPEDIA.
© 2000 World Book, Inc. By permission of the publisher, www.worldbook.com

Mark your choices for multiple-choice questions 20 through 24 by filling in the circle next to the best answer.

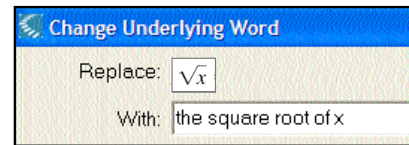
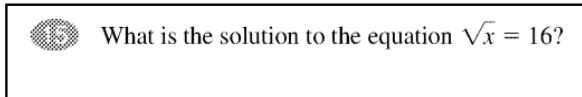
<p>20. In this article, which of the following helps to keep bones strong?</p> <ul style="list-style-type: none"> <input type="radio"/> getting enough sleep <input type="radio"/> drinking lots of water <input type="radio"/> getting exercise <input type="radio"/> breathing deeply 	<p>21. According to the article, people can bring calcium into their bodies by</p> <ul style="list-style-type: none"> <input type="radio"/> eating meat. <input type="radio"/> drinking milk. <input type="radio"/> eating bread. <input type="radio"/> drinking juice.
---	---

For example, test requirements may permit the test questions to be read aloud, but not the sample reading passage.

3. Edit underlying text to correct any recognition errors.

For example, this math question needs to be edited to be read correctly since math symbols are not always recognized properly by optical character recognition software.

The editing is easy to do. Simply select the text, then use the Change Underlying Word option to make the change by typing in the phrase to be read aloud.



4. Test may be copied to CD for secure dissemination on test day.

Step 3: Designate Which Features of Kurzweil 3000 Will Be Available During Testing For Individual Students

Kurzweil 3000 allows educators to customize testing accommodations to conform to individual IEP specifications. Tools such as dictionaries, spell checking, thesaurus and word prediction can be disabled or enabled for each student according to their IEP and the changes are reflected in the Kurzweil 3000 toolbar. The password feature prevents students from changing the designation during the test.

Default Toolbar with Word Support Features



Customized Toolbar Example #1 — Toolbar features have been restricted to simple reading functions for testing purposes (may be appropriate for high stakes testing situations).



Customized Toolbar Example #2 — Additional product features can easily be included on the toolbar to allow the student to respond electronically to test questions.



Kurzweil Educational Systems
A Cambium Learning™ Company

100 Crosby Drive
Bedford, Massachusetts 01730
T: 800.894.5374

T: 781.276.0600
F: 781.276.0650
www.kurzweiledu.com